

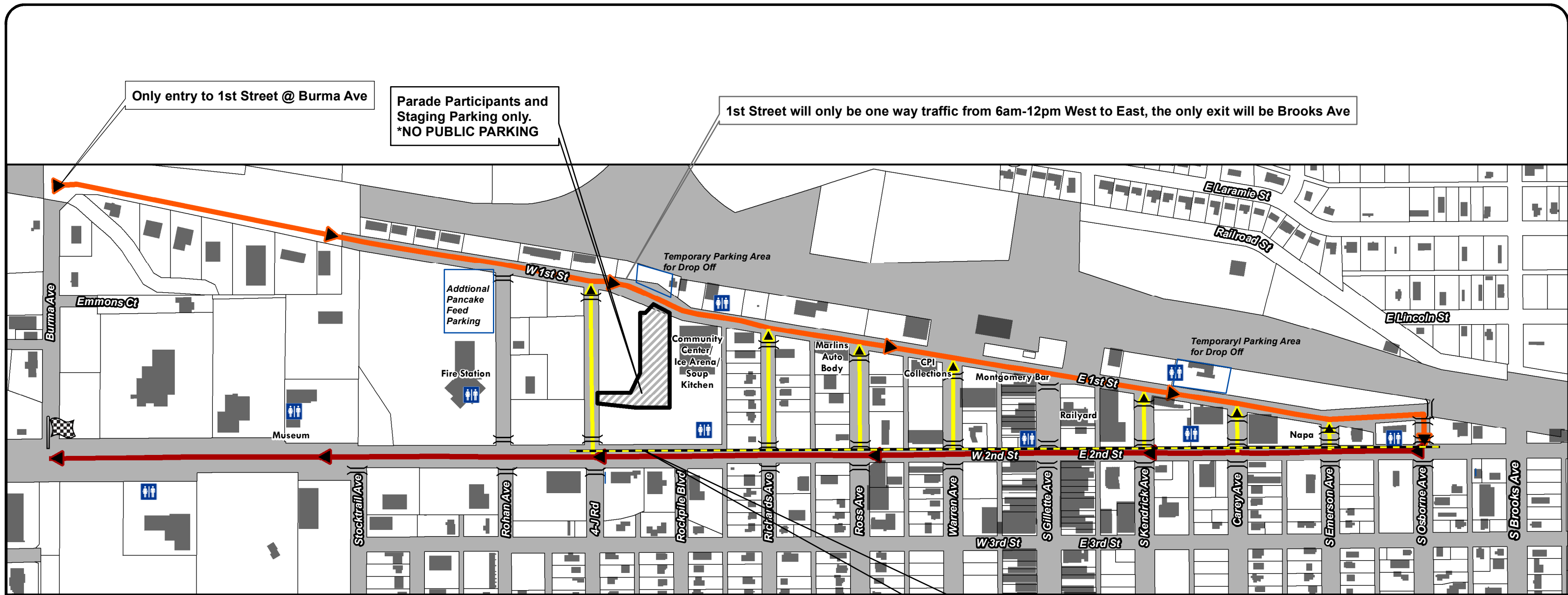


4th of July Parade Route



-  Parade Route
-  Primary Lineup & Staging
-  Back-up Lineup & Staging
-  Parade Participants Traffic Only
-  Staging Area
-  Barricades
-  PortaPotty/Business Restroom

Published 6/20/2019
Campbell County, Public Works Department, Surveying/GIS Division
K:\GIS\Requests\Internal\Parks\FourthOfJulyParade\2019



Only entry to 1st Street @ Burma Ave

Parade Participants and Staging Parking only.
***NO PUBLIC PARKING**

1st Street will only be one way traffic from 6am-12pm West to East, the only exit will be Brooks Ave

* Starting at 9am, 2nd Street will be closed from Brooks Ave. to Burma Ave. until parade is over

North lane of Hwy 14/16 will be for Parade Traffic only- All Parade Participants can utilize this lane from Brooks Avenue to travel west and gain access to the cross streets for line-up or participant drop off close to their line up area. (No parking – drop off only please.) This lane will stay open after the closure of the street until approximately 9:30 am for parade participants to access the lineup and staging area.