

Market SWINE, GOAT & LAMB IMPORTANT TAGGING DIRECTIONS

For 2021 the following steps must be taken to tag swine, goats & lambs for 4-H and FFA.

1. Last day to request tags is June 1st at 5:00pm at the Fair Office.
2. You will receive one tag per animal.
3. You will be responsible for tagging your animal.
 - a. Lambs, Goats, and Swine – place the rectangle-large numbers (male tag) on the **outside** of the ear.
 - b. Lambs, Goats, and Swine – place the circle-small numbers (chip-female tag) on the **inside** of the ear.
 - c. Y-TEX Taggers are available for purchase at the feed stores (blue & grey), it is not recommended to share taggers between locations. You can also check one out from the Fair Office.
4. Take 3 pictures of your animal.
 - a. One picture of the full left side
 - b. One picture of the full right side
 - c. One picture of the front of the animal – HeadShot – with the tag in the ear and tag# visible.
5. Send pictures and information for each tag to the Fair Office using one of the two options below.
 - a. Via email to Liz Edwards at gae73@ccgov.net
 - b. Via hard copy delivered to the **Fair Office ONLY**. Office Hours: Monday – Friday, 8:30am – 5:00pm
 - c. Each picture needs to be named with the side of Animal and Tag Number.
Example: Tag 132111, left side view
 - d. All tags given out must be accounted for or returned to the Fair Office.
Example ~ 5 tags = 5 animals or give extra back to the Fair Office.
 - e. All Market Animal Pictures and Tag information **MUST BE** received by 5pm on Tuesday, June 15th.
NO EXCEPTIONS!
 - f. **It is your responsibility to contact the Fair Office to confirm receipt of your photos by June 15th.**
Photos received after 5pm on June 15th WILL NOT be accepted.

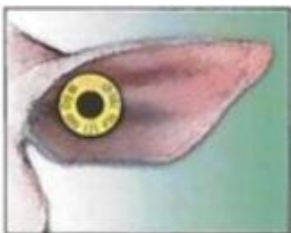


Please fill out the information for each animal in the spreadsheet. Please email or drop off the completed spreadsheet with pictures. Or you can download the form from the website, <https://www.ccgov.net/959/County-Fair> and type the information on it, save it and email it with the pictures.

This is an example of the information needed to accompany your photos of each Market Animal.

TAG NUMBER (Last 6 #'s)	Exhibitor Name	4-H or FFA	Animal Breed	Barrow/ Gilt Wether/ Ewe	Specific Description	Exhibitor Phone Number
132111	Example, Perfect	FFA	Chester White	Barrow	White w/ spots	307.xxx.xxxx

Go To
<https://www.ccgov.net/959/County-Fair>
 Youth Information page to download the spreadsheet to type
 information in and email back



Sheep/Goat



Swine

For any question or for a downloaded copy of the form to be e-mailed, please e-mail or call the Campbell County Fair office at 687-0200.

FAIR ENTRIES

Open now and Close **July 19th** at 5pm

HOW TO ENTER TAG ID IN SHOWWORKS

Department	<input type="text" value="Youth Livestock (J)"/>
Division	<input type="text" value="J-002 Youth Market Beef"/>
Class *	<input type="text" value="001 : Market Beef"/>
Tag ID *	<input type="text" value="39946"/> ← Last 5 digits go here
Description	<input type="text"/>
Club *	<input type="text" value="Little Powder"/>
Electronic ID *	<input type="text" value="949000011139946"/> ← All 15 digits go here

PLEASE LIST THE LAST 5 DIGITS OF THE TAG ID IN THE TAG ID FIELD AND ALL 15 IN THE ELECTRONIC ID FIELD.

<https://campb.fairwire.com/>

We need both fields in order for the scanners to work with the Ipad

Campbell County Fair Website = <https://www.ccgov.net/959/County-Fair>

Fair Entry Website = <https://campb.fairwire.com/>

